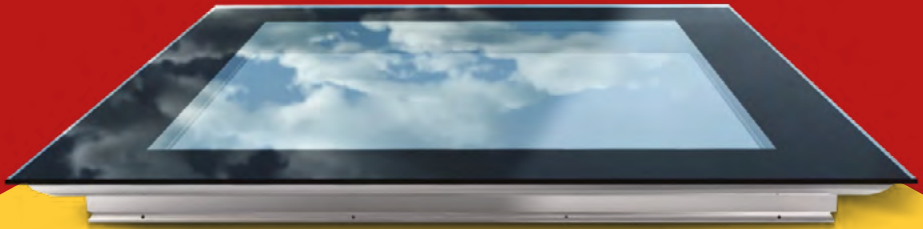


# blade brochure

"Architecturally speaking an  
amazing quality product, amazing  
service and value for money"

Craig Driver – MD Hoopers Architects



offset<sup>o</sup>

Ofset entered the market to design and deliver radical and contemporary rooflight glazing products for discerning clients. We want to give home owners, architects, designers and specifiers the ability to create unique, bespoke project-specific rooflights that will really make their projects stand out.



## Introducing The Blade

The Blade is the first in a series of new minimalist rooflight concepts we will gradually be introducing to the UK marketplace. With a brief to produce a flat roof window combining the highest quality specification, materials and manufacturing techniques with a highly individual aesthetic design, the Blade was born.

We feel the Ofset Blade is the most exquisitely detailed, robustly engineered and energy efficient modern flat rooflight in the industry. Our floating, frameless product with curved outer profile, substantial box-section main frame and infinity, floating glazing is truly beautiful to behold.

Our bespoke approach means all Ofset roof windows are hand built to order. Premium materials, solid hand-finished construction, manufactured in the UK to ensure premium quality. We are so confident in our product that we back our rooflights with a lifetime guarantee.

Quite simply the finest,  
most exquisitely detailed,  
energy efficient, flat  
rooflight system in the  
industry.◦



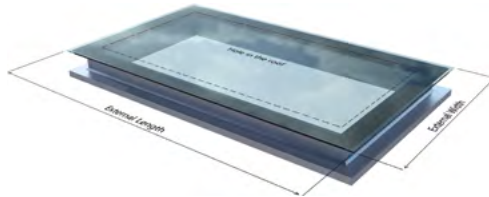
## Unprecedented Choice

As all Blade rooflights are hand made to order, the Blade can be specified in a vast array of options. We created our online [Bladebuilder](#) configuration tool which allows customers to design and cost their own unique roof window from the huge range of choices available. As you add or remove

different elements in the Bladebuilder, you will see a full colour image of your bespoke roof window and see the pricing and specifications adjusted accordingly. Choose sizes, frame colours, glass tints, border options and technical glazing to suit your own project-specific needs.

## Sizing

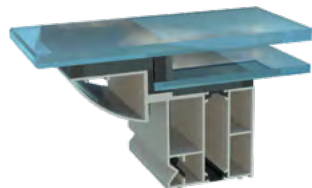
The Blade roof window is available in sizes from 500mm x 500mm up to 2800 x 1200mm (internal hole-in-the-roof measurements) and 850mm x 850mm up to 3150 x 1550 (external actual product size).



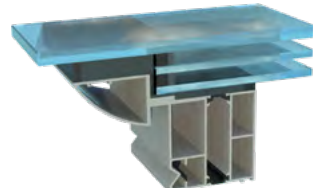
## Thermal Options

Select between double glazed units with Argon gas (Double-A) or triple glazed units with Krypton gas (Triple-K) coupled with the highest performing soft coat low-e glass available. Double-A Blades have a centre

pane U-Value of 1.0 w/m<sup>2</sup>k and Triple-K Blades have a centre pane U-Value of just 0.4 w/m<sup>2</sup>k. See our [U-Values Simplified](#) page on our main website for more info.

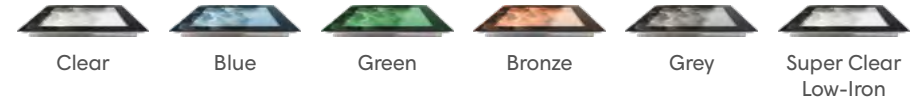


Double-A



Triple-K

## Glass Tints



Choose between clear glass, blue, green, bronze, grey tints or 'satin privacy' glass and if you suffer from low light then you can specify super clear low iron glass.

## Frame Colours



Choose between one of our six gorgeous standard matt finish powder coated frame colours all with a minimum 60 microns coastal grade paint thickness for long-term colour fastness.



Alternative Standard RAL Colour

### Choose Your Own

Or choose your own individual colour – specify any standard RAL colour for a small extra fee.

## Painted Borders



As standard, the Blade rooflight comes with a dark border leaving a crisp, clean floating 25mm glass overhang. Or you can choose one of four stunning ceramic painted fritts, up to three times wider than other products on the market.

## Glazing Upgrades



### Solar Control

If your building is prone to a lot of direct sunlight then it may be wise to upgrade to solar control glass which will bounce away excess heat and reflect up to 99% of ultraviolet rays.



### High Security Glass

Our high security toughened/laminated glass is up to 12.8mm thick, the strongest in the industry. It's made from two sheets of toughened glass bonded together, as opposed to two sheets of annealed glass, thus up to 6-8 times stronger than normal laminated glass.



### Noise Reduction

The Blade's ultra thick 10mm top glass pane combines with the 6mm bottom pane to act as a superb noise inhibitor giving up to -39db which is super quiet. Or if you prefer, upgrade to 'acoustic laminated' glazing which gives -49db. This toughened/laminated glass also acts as 'high security' glass.



### Low Iron Glass

Normal glass has a slight green tint, due to a small amount of iron content. This is no problem in single glazed units, but the more panes of glass you have the 'greenier' the glass tint. Low-iron glass drastically reduces this effect and allows more natural light to enter the building which can be particularly helpful if you are in an area of low-light.

## Glass Values

	Double Glazed Soft Coat Argon 10-20-6	Triple Glazed Double Soft Coat Krypton 10-12-6-12-6	Double Glazed Soft Coat Argon 12.8 Tough/lam Security	Triple Glazed Double Soft Coat Krypton 8.8 Tough/lam Security	Double Glazed Soft Coat Argon 12.8 Tough/lam Acoustic	Triple Glazed Double Soft Coat Krypton 8.8 Tough/lam Acoustic
Centre Pane U-Value	1.0 w/m²k	0.4 w/m²k	1.0 w/m²k	0.4 w/m²k	1.0 w/m²k	0.4 w/m²k
Solar Gain as a %	54%	44%	54%	44%	54%	44%
Sound Dampening	-39 db	-42 db	-44 db	-44 db	-49 db	-49 db

If solar control glass is specified the g-value (solar gain) will drop down to 39% for double glazed and 34% for triple glazed. Please note that solar gain can be a plus in cooler

periods due to the harvesting of free heat from the sun. Thus triple glazed insulated glass units are not necessarily the best option for British weather.

## Light Transmission

	Clear	Clear Low-Iron	Clear Solar Control	Blue Tint	Green Tint	Bronze Tint	Grey Tint
Light Transmission as a %	78%	91%	68%	46%	65%	42%	38%
Solar Heat Reflection as a %	61%	61%	34%	52%	52%	52%	52%

If your rooflight is situated in an area of low light then consider extra clear 'low-iron' glass which will improve light transmission even further at up to 91% and it also helps remove the 'greeny' tint often associated with double and triple glazed roof windows.

Low iron glass can only be utilised as a 'clear' glass option.

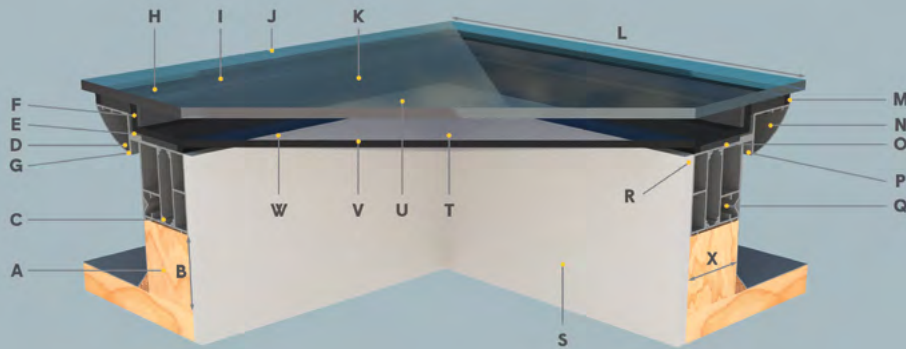
\*These figures are to be used as a guide, and can vary slightly according to glass specification, rooflight orientation & size.



## Technical Specifications

The Blade is probably the most technically advanced rooflight available in the industry. The Blade looks beautiful on the outside and is superbly specified on the inside. Ofset have worked diligently with some industry titans such as 3M, Guardian Glass, Dow Corning, Techno-Form Bautec and

Interpon to imagine and realise the Ofset Blade concept. Through close relationships with specialist glazing engineers, fenestration energy physics consultants, architectural technicians and commercial glazing leaders, we are incredibly proud to bring the Ofset Blade to market.



A – fully insulated kerb  
 B – minimum kerb height 50mm  
 C – polyamide thermal breaks  
 D – curved outer profile  
 E – 3M VHB structural glazing tapes tested and approved for Ofset by 3M  
 F – warm edge, silicone sealed units  
 G – lift from here  
 H – easy clean coating  
 I – 10mm toughened top pane  
 J – polished glass edges  
 K – heat soak tested glass  
 L – external measurements from here  
 M – Dow Corning 121 structural silicone  
 N – 60 microns coastal powder coating paint thickness

O – filler tapes  
 P – roof membrane pocket  
 Q – concealed Screw ports  
 R – plaster edge trim by client  
 S – plasterboard and skim  
 T – soft coat low-e coatings  
 U – Double-A centre pane Ug-value 1.0 w/m<sup>2</sup>k, Triple-K 0.4 w/m<sup>2</sup>k  
 V – 6mm toughened or 12.8mm toughened/laminated glass  
 W – Double-A double glazing cavities filled with argon gas or Triple-K triple glazing with krypton gas  
 X – kerb/frame width 75mm

## General

- All glazing meets and exceeds current building regulation heat loss requirements
- Aluminium section 6063 T6 alloy
- Frame paint in 6 standard RAL colours: Black 9005, Anthracite 7016, Grey Aluminium 9007, Silver Aluminium 9006, Grey 7001, White 9016 or specify RAL colour of your choice
- Glazing options – solar control, acoustic, security, super clear low-iron
- Glass tint colours – clear, bronze, green, blue, grey, satin privacy
- Painted border colour options - standard, RAL Black 9005, Anthracite 7016, Grey 7001, White 9016
- As low as 0.8 full system overall U-d Value
- Fully structurally designed to comply with applicable design codes
- Full wind load and snow load calculations
- Designed to be used at heights below 300 metres mean sea level
- SCIA finite element modelling
- Frame and glass calculations to EN ISO 10077-2
- Ug calculations to EN 673
- Window calculations to EN ISO 10077-1
- Toughened safety glass manufactured to BS EN 12150
- Heat soaked toughened glass manufactured to BS EN 14179.

## Proudly Working With





## Lifetime Guarantee

The Ofset Blade comes with an industry first lifetime guarantee.

If the Blade rooflight fails, we replace it. Simple.



## Production & Delivery

As each Blade is made to the client's specific design, there is 20-30 working day lead time for production and delivery. In our opinion, an Ofset Blade is worth the wait.

ofset<sup>o</sup>

Love • Design • Order • Enjoy

01733 215564  
info@ofset.co.uk  
ofset.co.uk

Ofset Ltd.  
BCS House, Pinfold Road  
Bourne, Lincs PE10 9HT