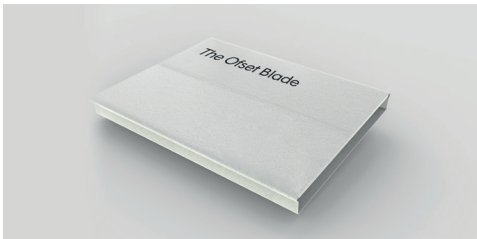


Blade Fit - A Simple Guide

If planned correctly the installation of the Blade is very simple.

It should take on average 30 minutes including time allowed for offloading the product from the delivery vehicle.

Instructions

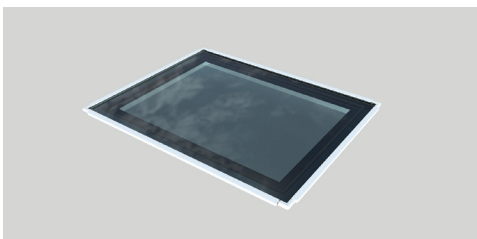


- 1)** Ensure you have allowed for the weight of your Blade before offloading from the delivery vehicle. If lifting manually allow approx 30kgs per person.

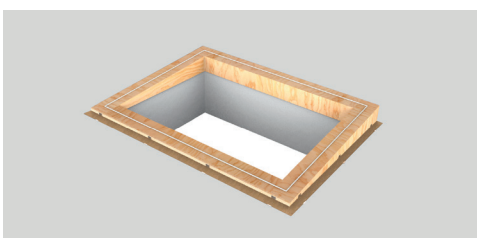
- 2)** If you are storing the rooflights please do not store one Blade on top of the other. Store in a shaded, dry place.



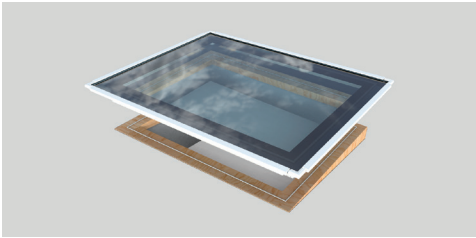
- 3)** Ensure you have allowed suitable manpower or necessary lifting equipment to place the rooflight onto the kerb/roof.



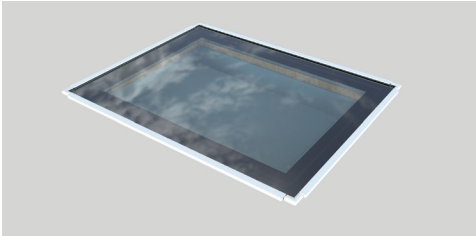
- 4)** Remove the packaging except for the taped foam around the glass edge.



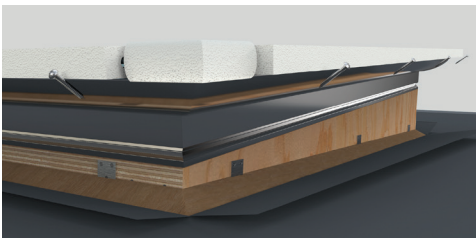
- 5)** Apply an approximately 8mm wide bead of silicone along the middle of the top of the kerb.



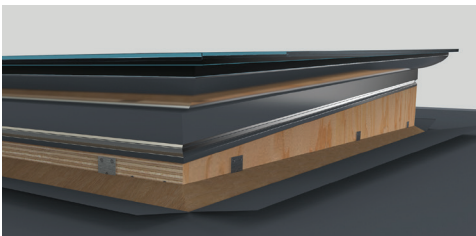
- 6)** Lift the Blade from the bottom of the outer curved frame. Lower carefully onto the kerb.



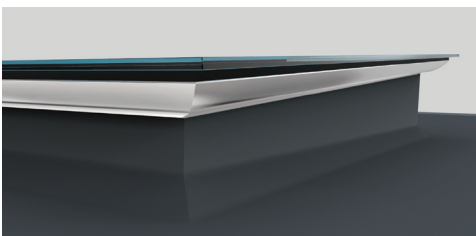
- 7)** Make sure the rooflight is evenly spaced around the kerb and centred.



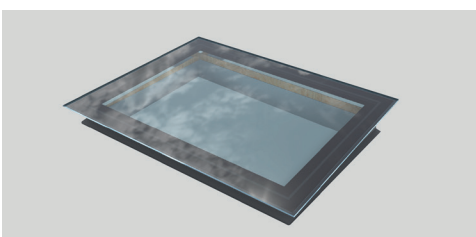
- 8)** Insert supplied screws into the pre-drilled holes. Do not over-drill.



- 9)** Remove the the remaining packaging from the glass edge.



- 10)** Affix the roof covering up the side of the kerb/frame and under the 15mm gap between the main box section frame and the curved external section. If using a torch to heat the roof covering material, only heat the roof covering before affixing.



- 11)** Clean.

That's it! Job done and dusted.
Enjoy your beautiful eye to the sky.

Love • Design • Order • Enjoy